

LED Linear Lighting

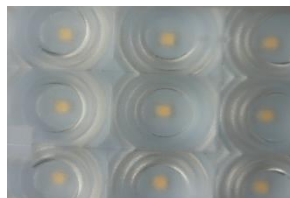


LED Linear Lighting can perfectly replace traditional light. Using Light Guide Plate, it has the feature of uniform and smooth light beam, low glare rating, low light pollution, and excellent protection from eyestrain.

- Ultrathin design
- High bright SMD2835, low attenuation rate
- Linear art beauty
- Beam angle : shine down 30°/60° /90°

Two-way light-emitting 20° /20°, 40° /40°

Product Details and Structure Picture



High brightness SMD2835

PMMA: Matte anti-glare

High thermal conductivity

High resistance to aging

aluminum plate

Efficient light transmission

Product Description



One-way light 18°

- Stable constant-current
- High quality light guide plate
- Homogeneous emitting
- Voltage: AC200-240V/
100-277V/100-240V
- No Mercury Inside, No UV
- Flicker-Free Lighting

Application Areas

- Special effects place
- Large store center
- Shopping mall
- Chain jewelry store,
jewelry shopping center.
- Clothing shopping center
- Furniture shopping center
- Leather goods shopping center

Application notes

- IP20 for indoor use only
- Professional electrician for installation only
- Switch off before installation
- Do not touch when in use
- Keep away from hot steam and corrosive gas

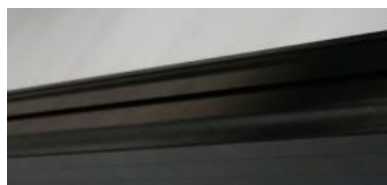
Driver Certificates

CE FC SAA

Main Technical Parameter

Product model	PSLL-0618	PSLL-0928	PSLL-1240	PSLL-1560
Input voltage	AC200V-240V	AC200V-240V	AC200V-240V	AC200V-240V
Frequency range	50HZ/60HZ	50HZ/60HZ	50HZ/60HZ	50HZ/60HZ
Total harmonic distortion	≤20%	≤20%	≤20%	≤20%
Power factor	>0.88	>0.9	>0.9	>0.9
LED Working voltage	DC30-42V	DC30-42V	DC30-42V	DC30-42V
LED quantity	66PCS 2835LED	99PCS 2835LED	132pcs 2835LED	165PCS 2835LED
System consumption	18W+5%	28W+5%	36W+5%	60W+5%
LED luminous efficiency	100/120LM/W ±5%	100/120LM/W ±5%	100/120LM/W ±5%	100/120LM/W ±5%
Lamp's efficiency	85%	85%	85%	85%
Illuminance uniformity	>80%	>80%	>80%	>80%
Color temperature	Warm white: 2800-3500K			
	Naturally white: 4000-4500K			
	Pure white: 5500K-6000k			
Color rendering index	Ra>80			
Light distribution	Symmetrical / circular spot			
Light design	LED+PMMA two light distribution			
LED Junction temperature	≤ 65℃			
Working temperature	-20℃——+50℃			
Storage temperature	-20℃——+60℃			
IP Grade	IP20			
life-span	> 30,000H			
Connect wire	Brown L	Live wire		
	Blue N	Zero line		
	Yellow-green	Ground wire		
Color of lamp shell	Silvery			
LED Linear light Warranty	5 years			

Beam Angel	Shine down 30°/60°/90° Two-way light-emitting 20°/20° One-way light 18°			
Dimmable	NO			
L* W * H size (mm)	572 L*65 W*58 H	860L*65 W*58 H	1144 L*65 W*58H	1430 L*65W*58H
gross product (Kg)	≈1.5Kgs	≈2.1Kgs	≈2.6Kgs	≈3.1Kgs
Qty /Carton (PCS)	6pcs/CTN	6pcs/CTN	6pcs/CTN	6pcs/CTN
Gross weight/Carton	≈8.5Kgs	≈12.65Kgs	≈15.65Kgs	≈19.25Kgs
Carton Size(cm)	64.2*24.3*17.5cm	94.2*24.3*17.5cm	124.2*24.*17.5cm	154.2*24.*17.5cm



High thermal conductivity

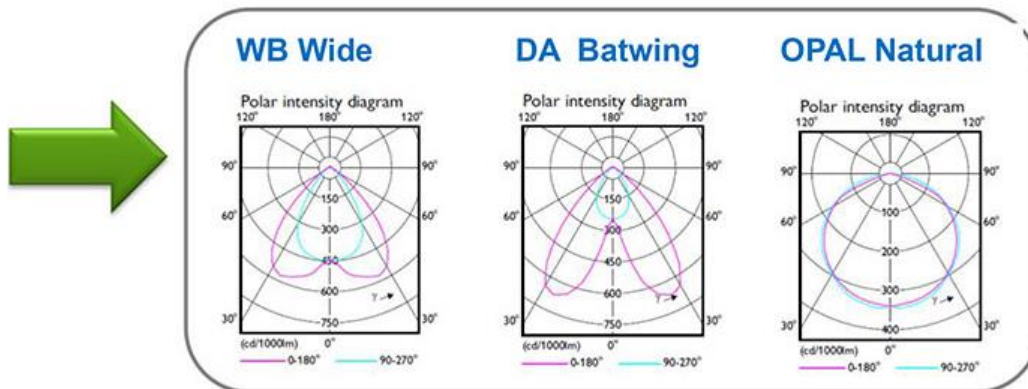
aluminum aviation

Color: black / silvery /golden

High-strength steel

suspension wires

Irradiation direction and Effects schematic

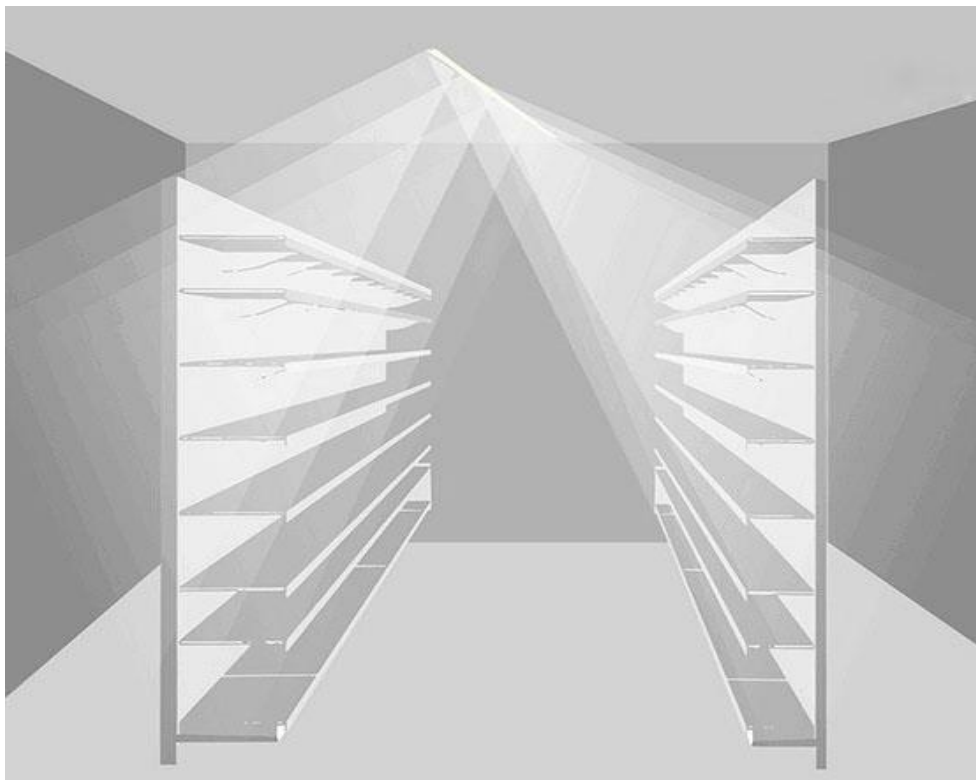


Irradiation direction and Effects schematic

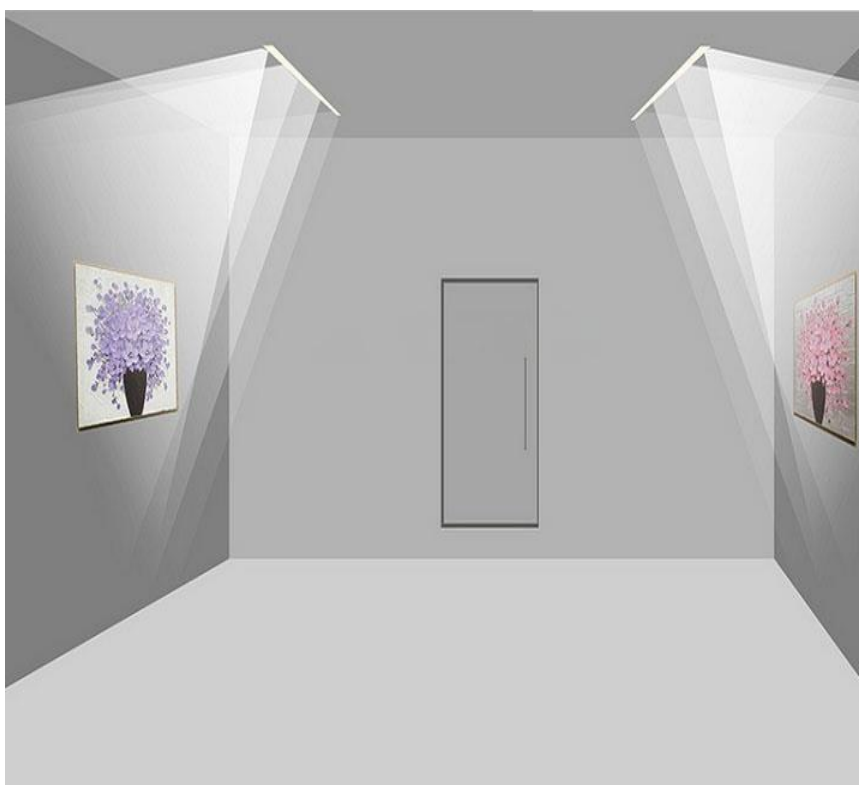
1. Shine down 30°/ 60°/90°



2. Two-way light-emitting 20°/20°



3. One-way light 18°



Linear Light, low UGR



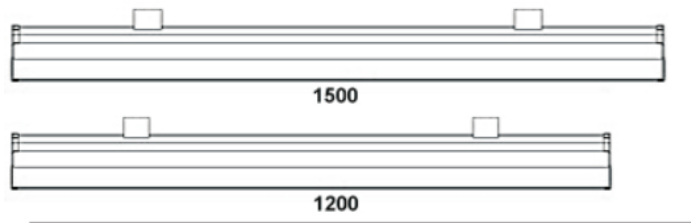
Product Description:

- Al6063 Aluminum Material, durable and indeformable;
- Stream-line profile design, good heat dissipation, Anti-glare;
- Installation: ceiling and suspending;
- Unique connector, easy for connecting, loaded power up to 2000W in line;
- 0-10V PWM DALI dimmable system is available;
- UGR16;
- IP Rating: IP44;
- CLASS II Lamp;
- THD<20%, excellent electromagnetic compatibility, no harm to surroundings;
- Replace: 120W + T8, T10 or T12;
- Warranty: 5 years;
- Application: supermarket, office space and station.

UGR16 LED GRILLE LAMP

Unmatched Lighting Performance And Quality With No Compromise

Product Size(mm):



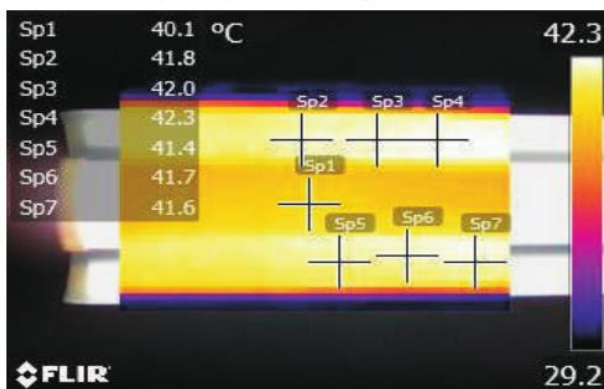
Specification

Family Model No	LT-GL-662
Wattage	40W 60W
Working Voltage	AC120-277V / AC220-240V
LED Chip	SMD2835
Lumen Per Walt	up to 130LM/W
Beam Angle	105°
Color Temperature	3000K, 4000K
Power Factor	0.95
Operating Temperature	-30° to +50°
CRI	≥85
THD	<20%
Electrical surge protection	2KV
Certificate	CE ROHS

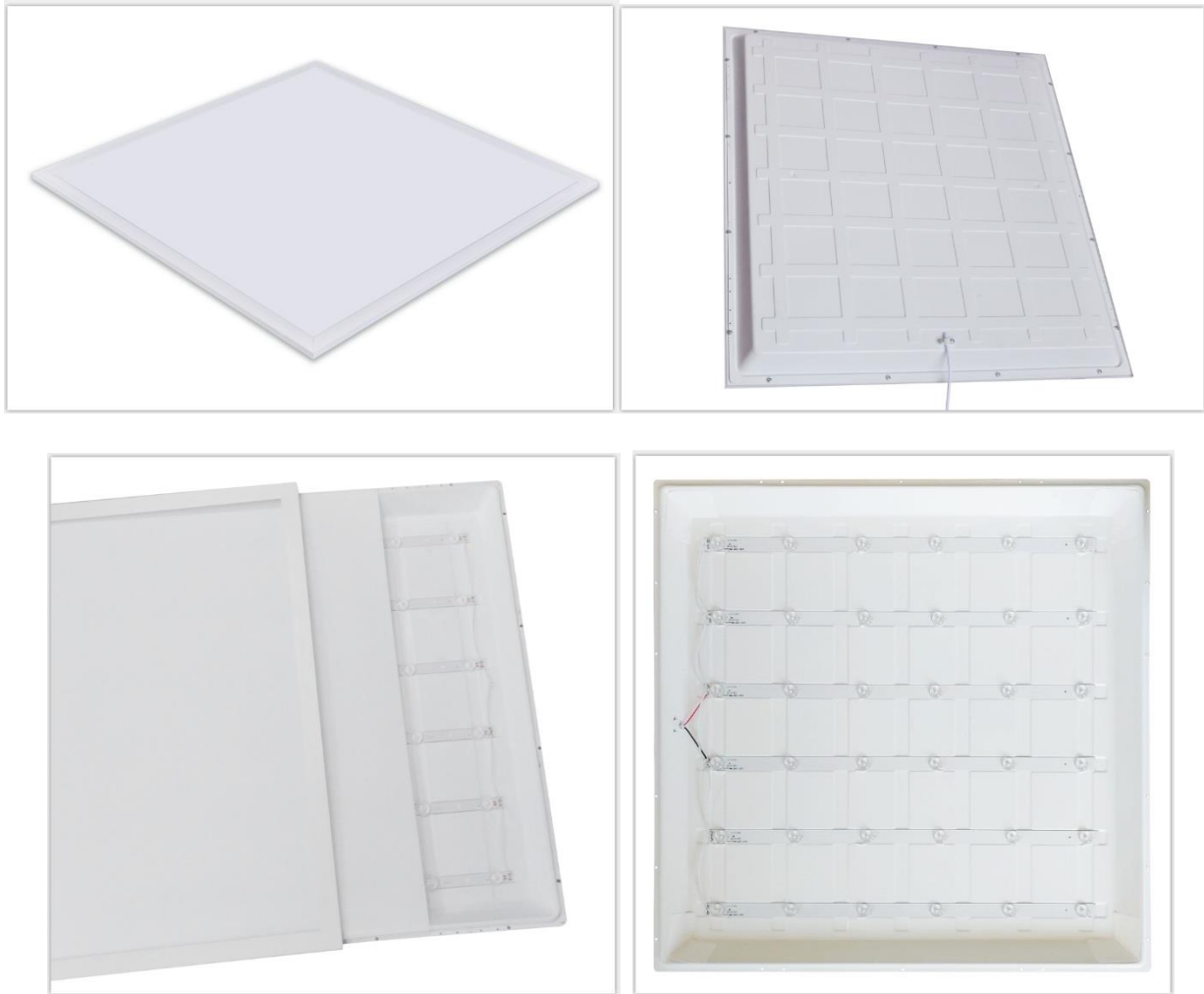
Chip Temperature Test:

Chip average temperature:42.3°C

Great heat dissipation performance, good for LED lifespan



Backlight LED Panel Light High Efficiency



1. Product Features

LED backlight panel light adopts fireproof plastic lamp body, integrated design, good insulation performance, higher safety, simple and elegant appearance, and the frame is made of 6063 aluminum frame, which can be treated with oxidized silver and painted white. The lampshade adopts a highly transparent PS diffuser plate with good uniformity of illumination and no glare. The light source adopts high-brightness 2835 leds, no blue light hazard, healthy light, and secondary optical light guide design makes the light softer. Suitable for indoor mounting or snap mounting.

Available wattage: 50-100w, up to 135 lm/w

- High efficiency & energy saving. Under the condition of the same illumination. It saves more than 67% energy compared with the traditional lamp.

- Wide input voltage(200-240V); Free-flicker.
- Long life span, using semiconductor chip as the light resource, the life can be over 60,000hrs.
- No UV & IR. It won't distribute ray radiation
- Eco-friendly, No Hg & Xe, or other harmful element. Recyclable, also it won't generate EMI.
- High-performance external constant current driver, flat and smooth frame, very easy to clean

3. Applications



- Direct replacement for luminaires with 4 x 18 W or 4 x 14 W fluorescent lamps
- Corridors
- Offices
- Conference rooms
- Reception areas
- Foyers
- Elevators
- Suitable for recessed ceiling systems with grid size of 595x595 or 600x600 mm

4. Technical Parameters (50w)

Power parameters

Model name	PSP-66-50 (60x60)	PSP-123-50 (120x30)
Input Voltage/Frequency	AC200-240V 50/60Hz	AC200-240V 50/60Hz
Input Current (Typ)Max	0.2A	0.2A
Output Voltage	DC30-40V	DC30-40V
Output Current	1300mA	1300mA
Power Factor	PF>0.9	PF>0.9

Lighting parameters

LED Consumption	50W
Lumen	5500±200LM - 6500±200LM
LED Type	SMD 2835
Color Temperature	3000/4000/6000K
Color Rendering Index	Ra≥80
Operating Temperature	-20~+40 °C
IP Grade	IP40
Life-span	>60000Hrs
LED Chips	San'an / Epistar
Energy efficiency	A ⁺
Beam Angle	120°
Frame Materials	PP+ Aluminum
Appliance Class	Class II